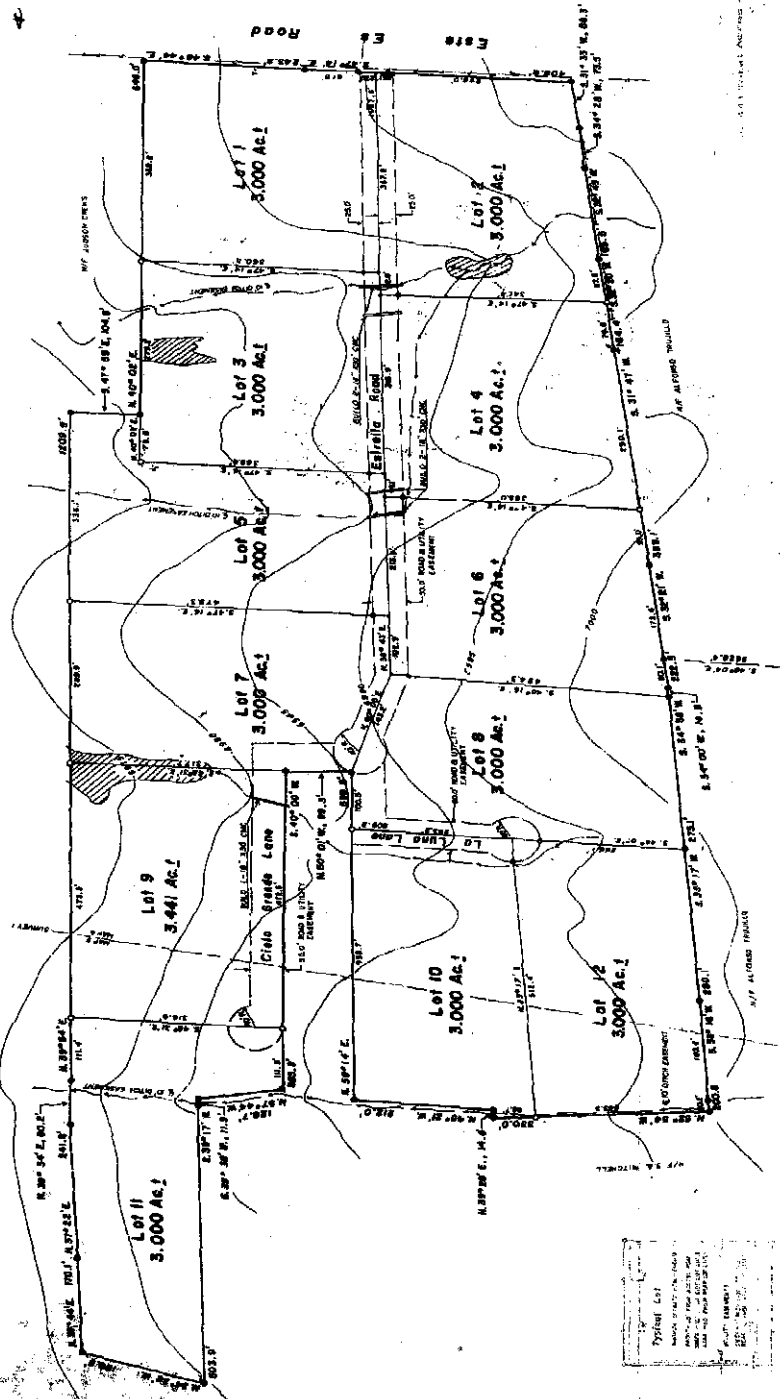


Tierra del Sol Subdivision

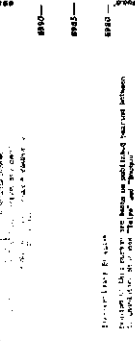
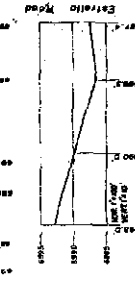
4-157456
8-6-92



APPROVED FOR THE COUNTY OF SAN JOAQUIN
COUNTY CLERK
DATE: 8/6/92

APPROVED FOR THE COUNTY OF SAN JOAQUIN
COUNTY CLERK
DATE: 8/6/92

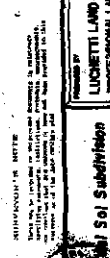
APPROVED FOR THE COUNTY OF SAN JOAQUIN
COUNTY CLERK
DATE: 8/6/92



Road Profiles

THIS PROJECT IS LOCATED WITHIN THE
COUNTY OF SAN JOAQUIN, CALIFORNIA.
THE TOTAL AREA OF THE PROJECT IS 33.000 ACRES.
THE PROJECT IS DIVIDED INTO 11 LOTS.
THE TOTAL AREA OF THE PROJECT IS 33.000 ACRES.
THE PROJECT IS DIVIDED INTO 11 LOTS.

Vicinity Map



APPROVED FOR THE COUNTY OF SAN JOAQUIN
COUNTY CLERK
DATE: 8/6/92

APPROVED FOR THE COUNTY OF SAN JOAQUIN
COUNTY CLERK
DATE: 8/6/92

APPROVED FOR THE COUNTY OF SAN JOAQUIN
COUNTY CLERK
DATE: 8/6/92

APPROVED FOR THE COUNTY OF SAN JOAQUIN
COUNTY CLERK
DATE: 8/6/92

APPROVED FOR THE COUNTY OF SAN JOAQUIN
COUNTY CLERK
DATE: 8/6/92

Prepared by
LUCCHETTI LAND SURVEYING, INC.
PROFESSIONAL LAND SURVEYORS
P.O. BOX 805 PARSONS AVENUE
MANTENO, CALIFORNIA 95330
TEL: 510-718-1500